

Link Instruments DSO-8000 Series Installation (Beta version)

Installation instructions for Win 8 (64 bit), Win 7 (64 bit) and Vista (64 bit) Beta

This workaround has two parts. In the first part we will force windows to associate the DSO-8502 or DSO-8202 with a signed cypress driver and in the second part we will assign the correct INF file to the DSO. There are a total of 20 steps. If you only have one screen printing out the instructions will probably make following them easier.

NOTE: Please install the software before connecting the hardware.

1.

Install software.

Connect the power supply to wall power.

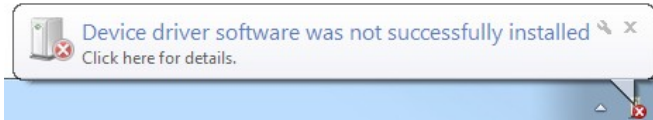
Connect the DSO-8000 to the power supply.

Connect the DSO-8000 to your computer using the provided USB cable.

Note: These screen shots were done with the DSO-8502, but the DSO-8202 will work in the same way.

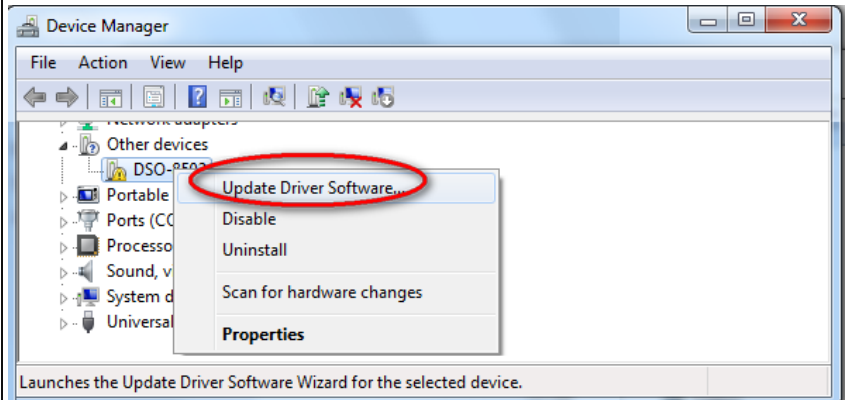
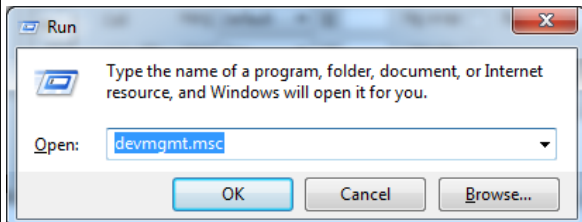
2.

You will get an error message saying the device was not installed successfully.



3.

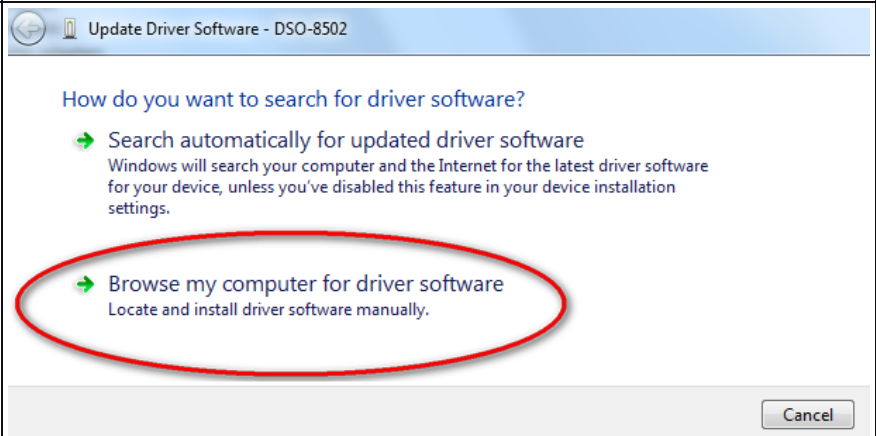
Open Device Manager.



Then right click on "DSO-8502" and select "Update Driver Software".

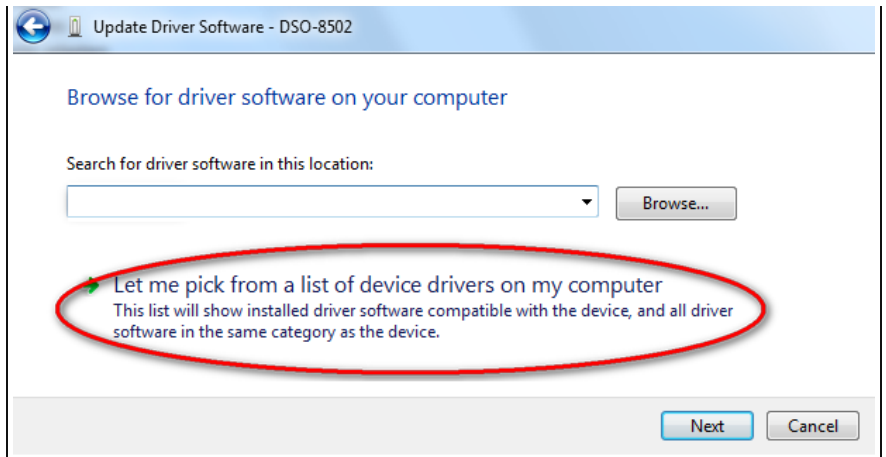
4.

Select "Browse my computer for driver software".

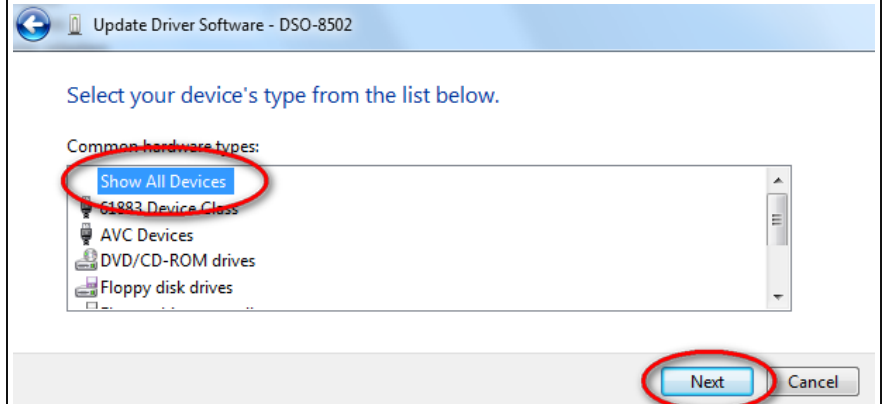


5.

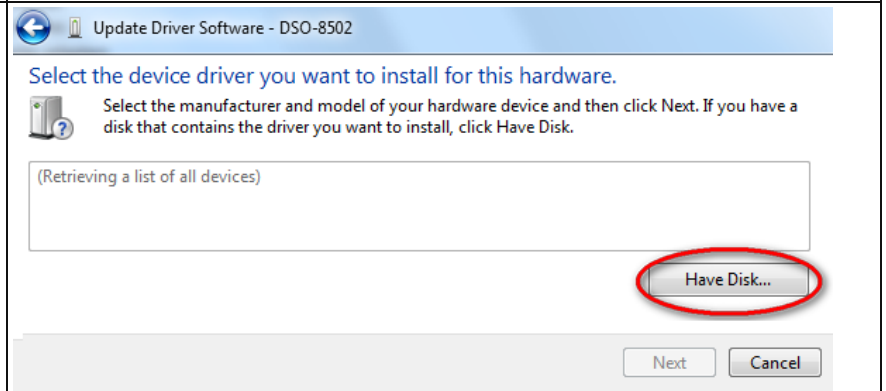
Select "Let me pick...".



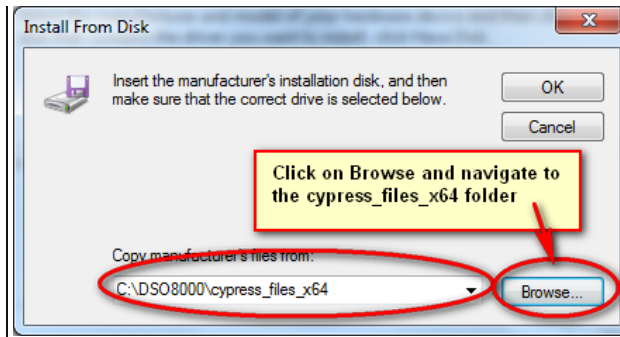
6.
Select "Show All devices" and click "Next".



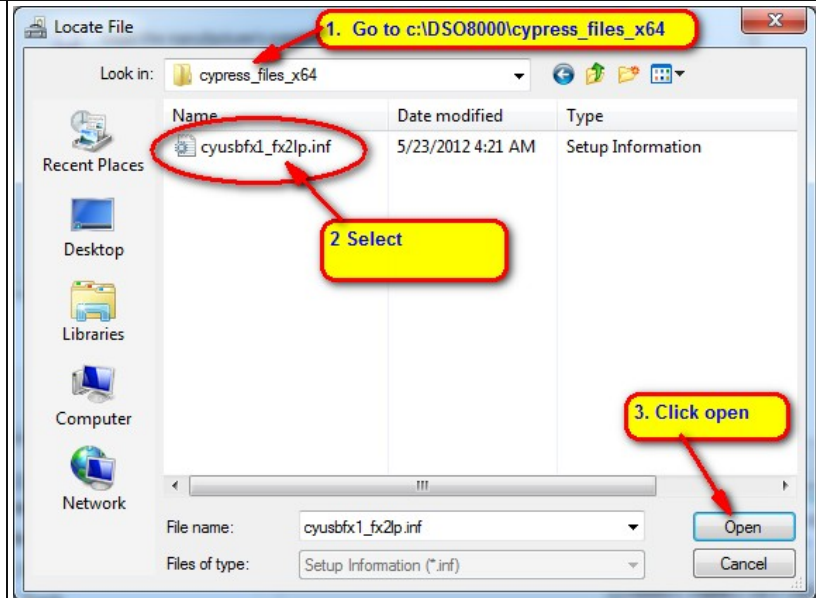
7.
Click "Have Disk".



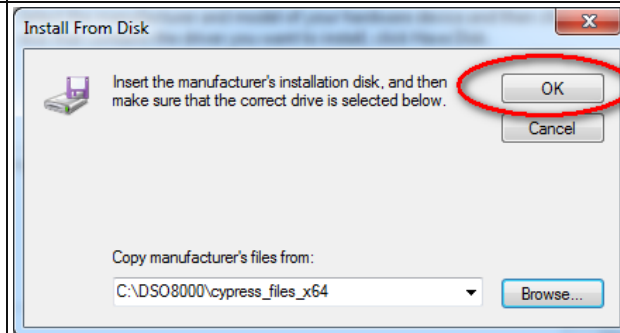
8.
Click "Browse" and navigate to "cypress_files_x64" folder.



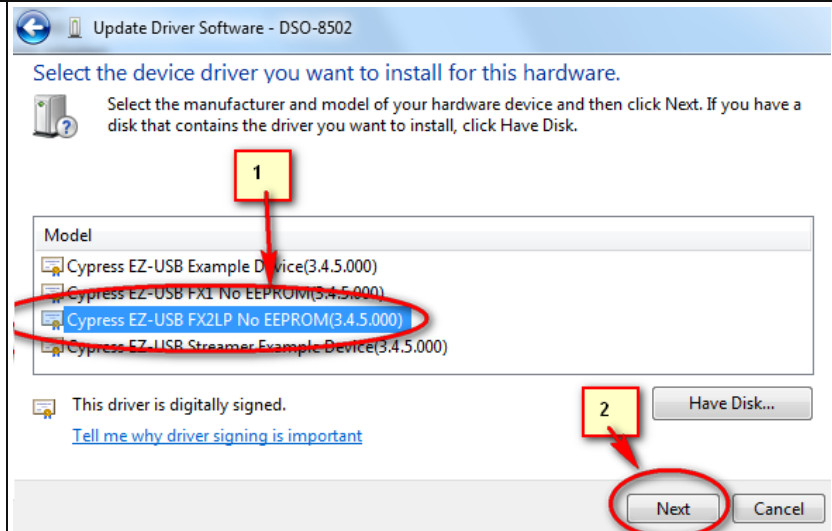
9.
Navigate to "cypress_files_x64" folder and select cyusbfx1_fx2lp.inf file
Then click "Open"



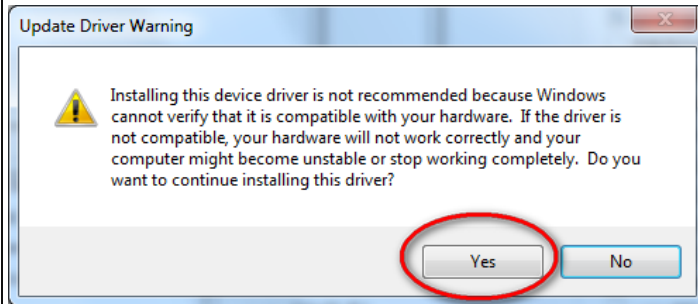
10.
Then click "OK"



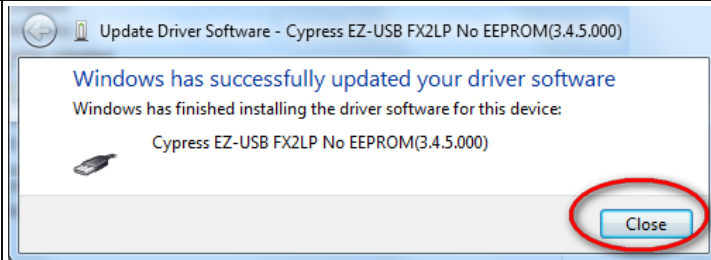
11.
Select "Cypress EZ-USB FX2LP No EEPROM..."
Then click "Next".



12.
Click "Yes".

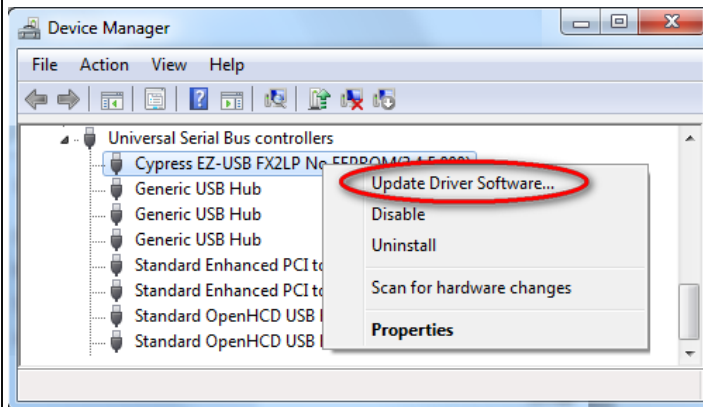
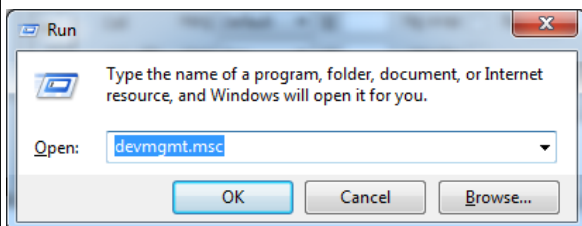


13.
Click "Close".



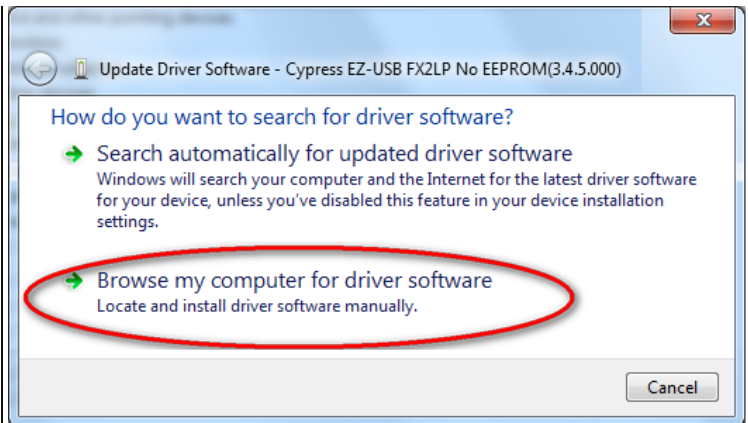
14.
Open Device Manager again.

 + R and enter devmgmt.msc

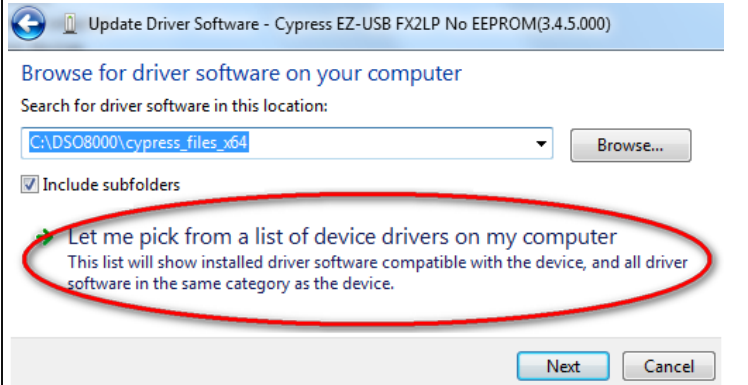


Then right click on "Cypress EZ-USB FX2LP No EEPROM.." and select "Update Driver Software".

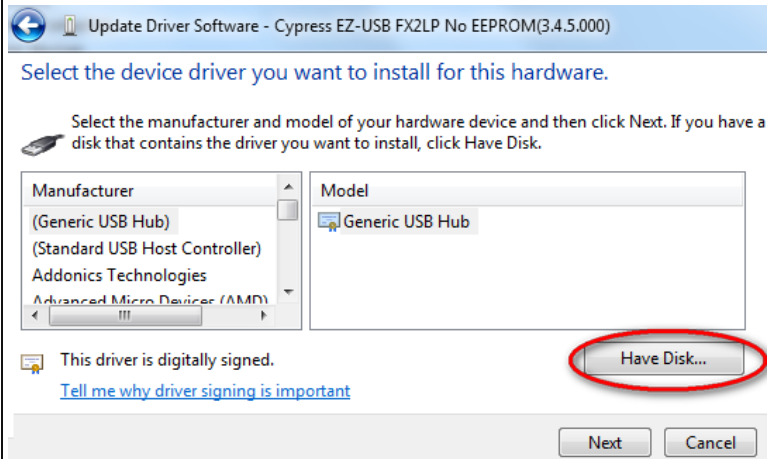
15.
Select "Browse my computer for driver software".



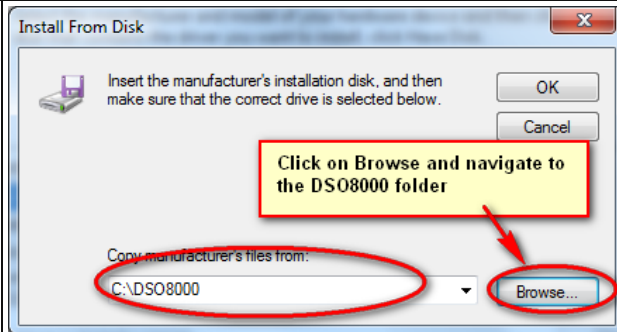
16.
Select "Let me pick...".



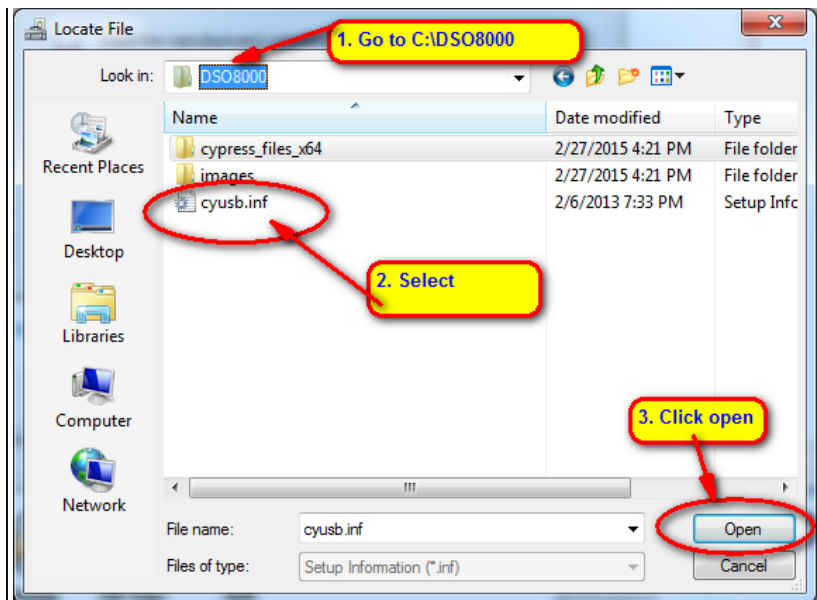
17.
Click "Have Disk".



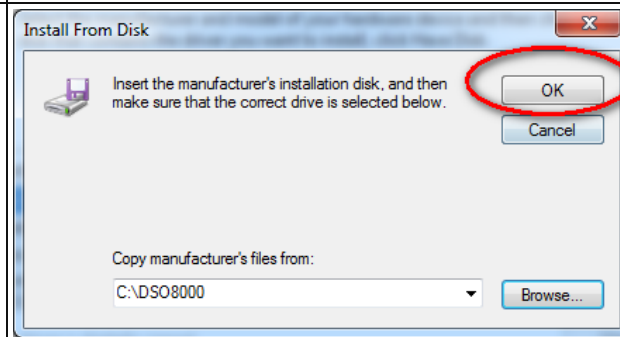
18.
Click "Browse" and navigate to "DSO8000" folder.



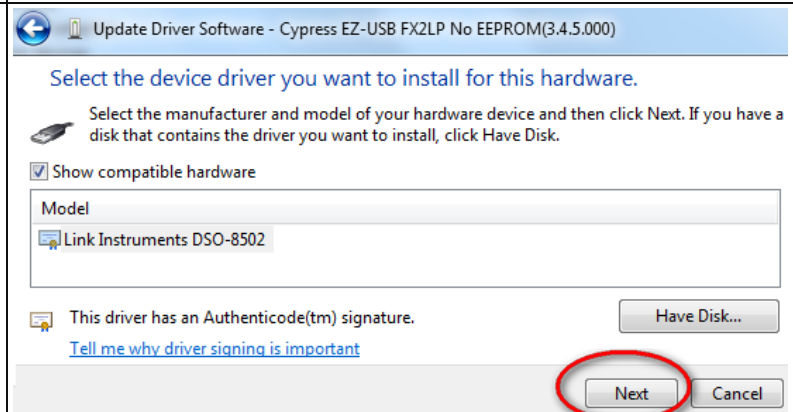
19.
Navigate to "DSO8000" folder and select cyusb.inf file
Then click "Open"



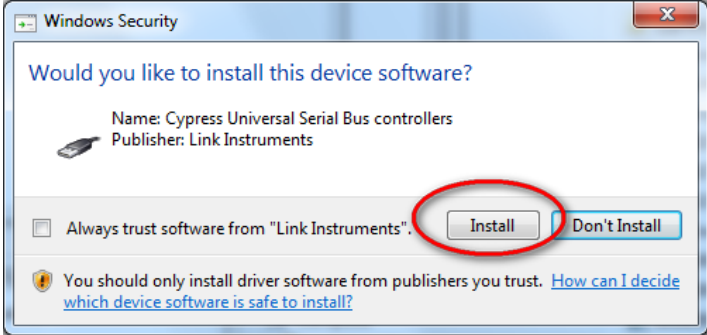
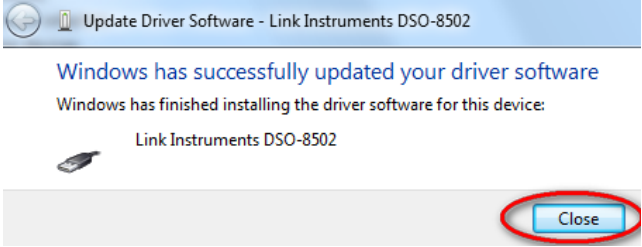
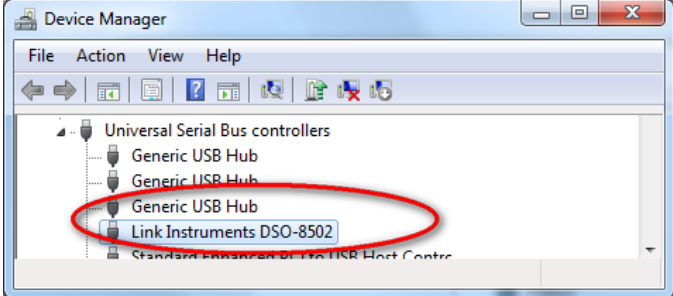
20.
Then click "OK"



21.
Click "Next"



22.
Click "Install"

	
<p>23. Click "Close"</p>	
<p>24. All done. Your DSO-8502 or DSO-8202 should run in win7 (64bit) or win8 (64bit) now.</p>	

Link Instruments

17A Daniel Road East
Fairfield, NJ 07004
USA
973-808-8990 (9am-5pm Eastern Standard Time)