

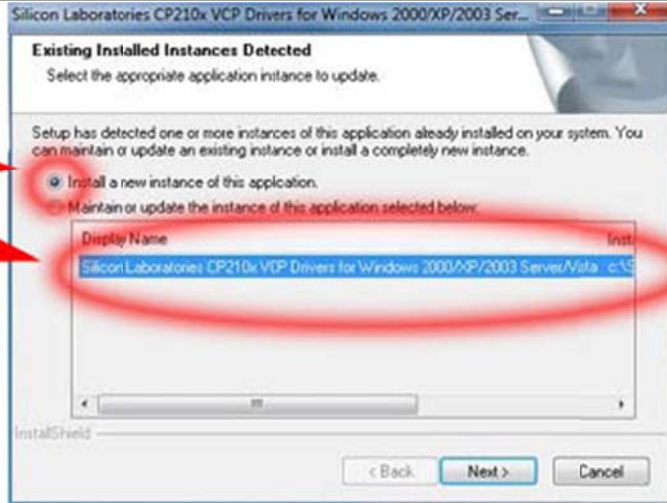
Link Instruments MSO-28 Vista (64bit) and Win7 (64bit) work around Installation

The MSO-28 uses the Silicon Laboratories USB chip. They have a driver package that is Vista64 and win7(64) certified. This workaround will use that driver for the MSO-28.

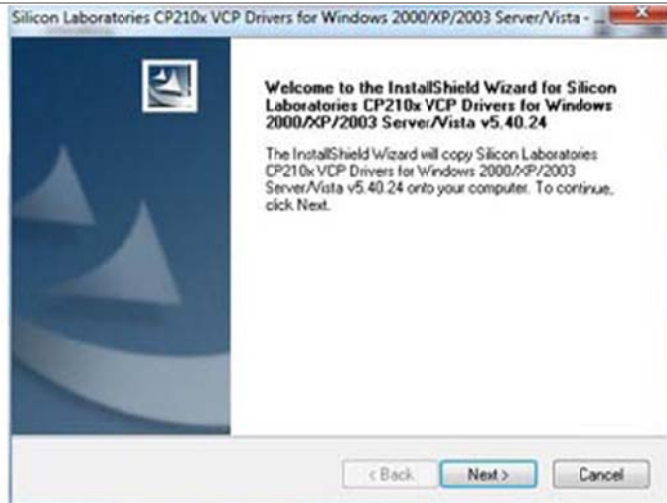
1.
Install the software first.

2.
The silabs driver will install now.

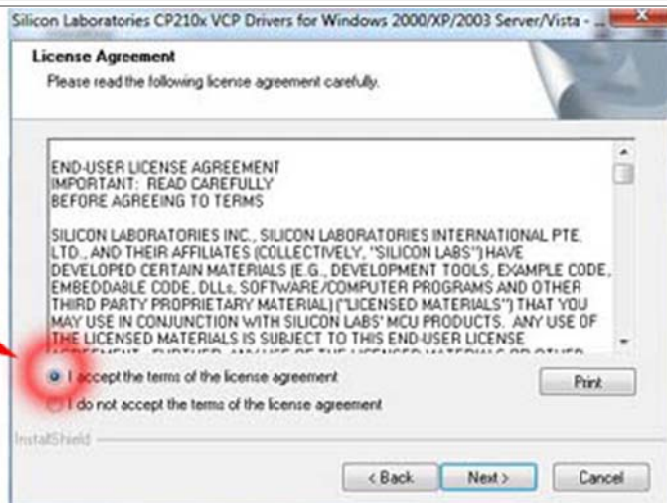
Select "Install a new..."
and
Select "Silicon laboratories CP210x "
Click Next.



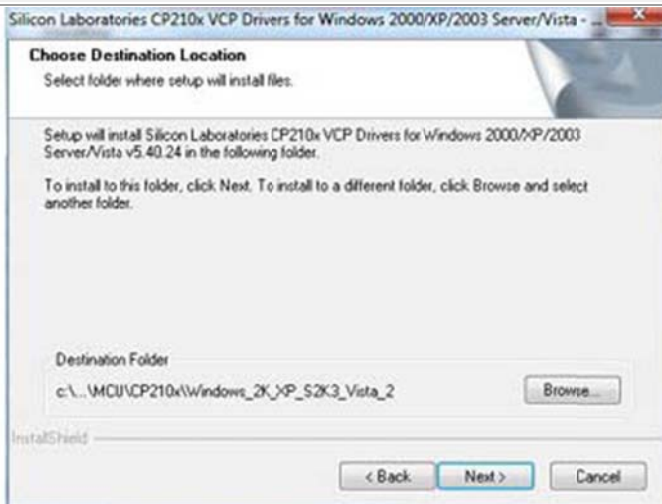
3.
Click Next.



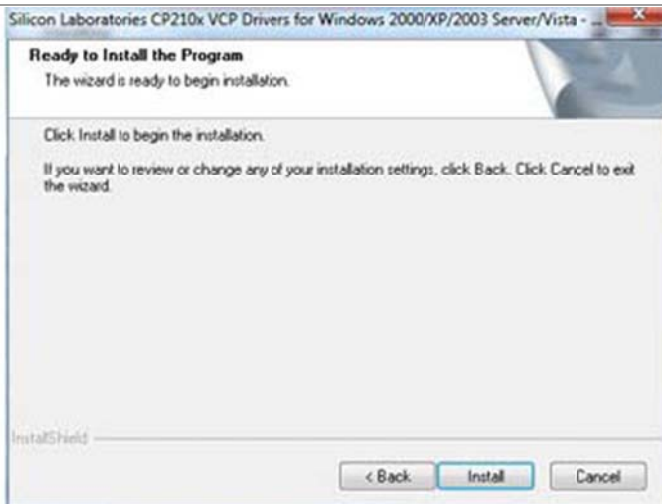
4.
Read terms
and
Select "I accept the..."
Click Next.



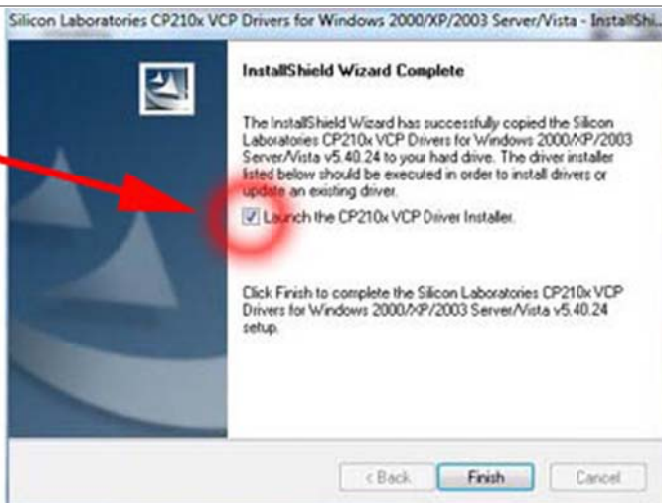
5.
Click Next.



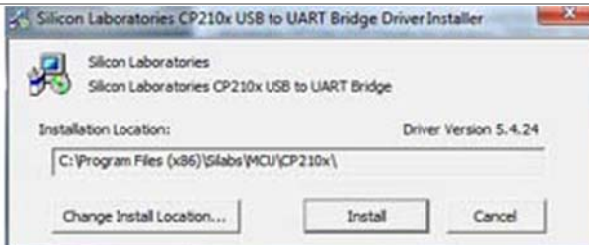
6.
Click Install.



7.
Select "Launch the CP210x..."
Click Finish.



8.
Click Install.



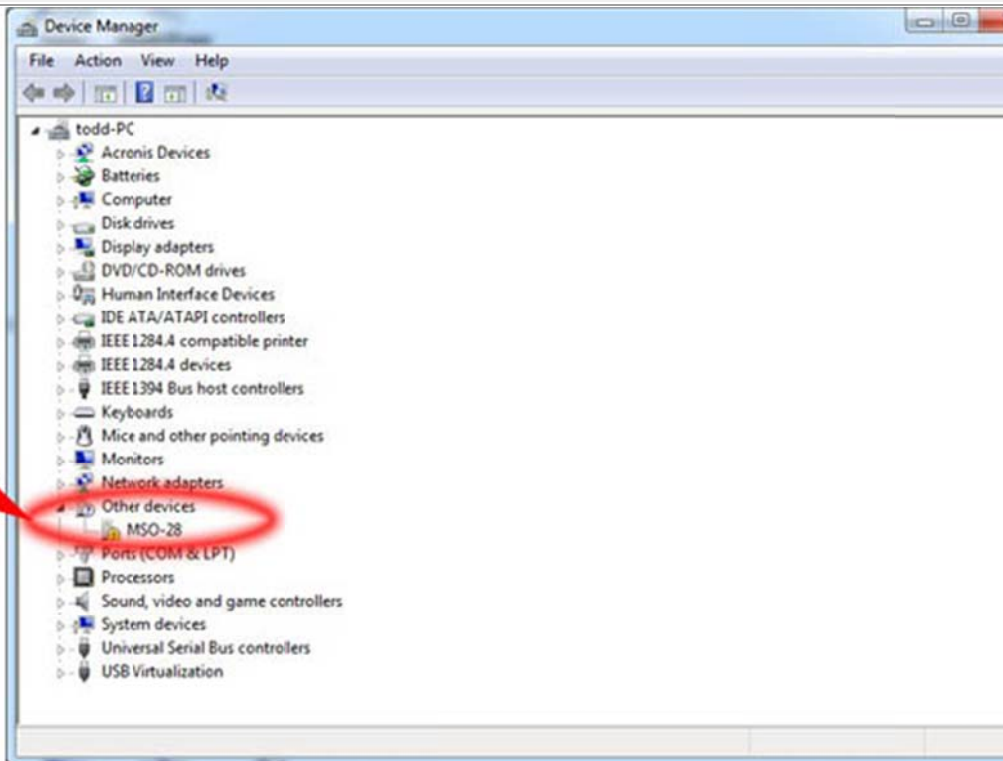
9.
Connect the MSO-28 to your computer.

10.

Open Device Manager.

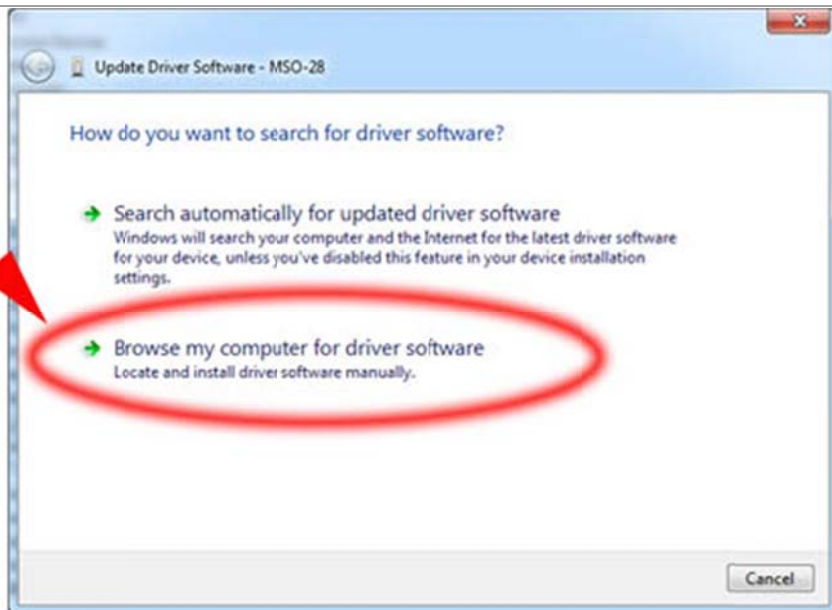
Select "Other devices"

Right click on MSO-28 and select "Update driver"



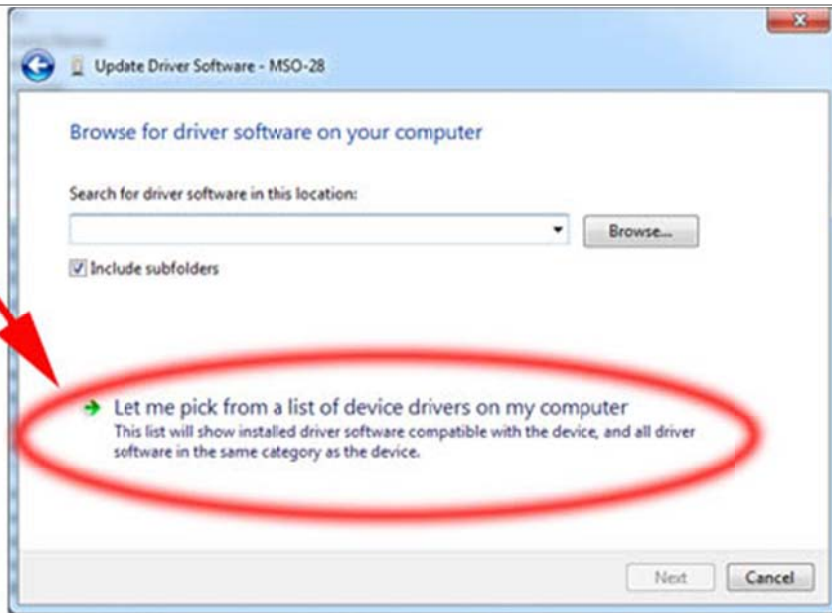
11.

Select "Browse my computer for ..."



12.

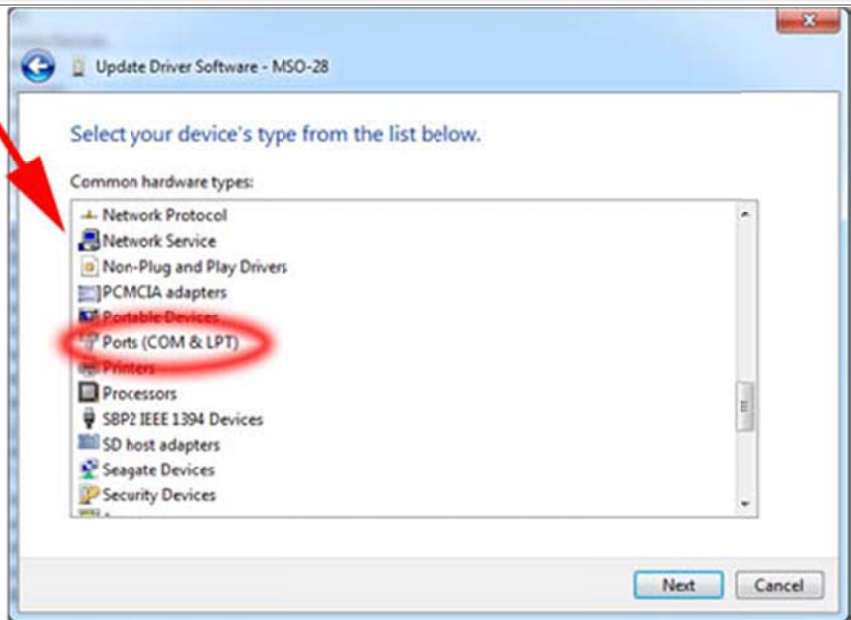
Click on "Let me pick from a list..."



13.

Scroll down and select "Ports (COM & LPT)"

Click Next

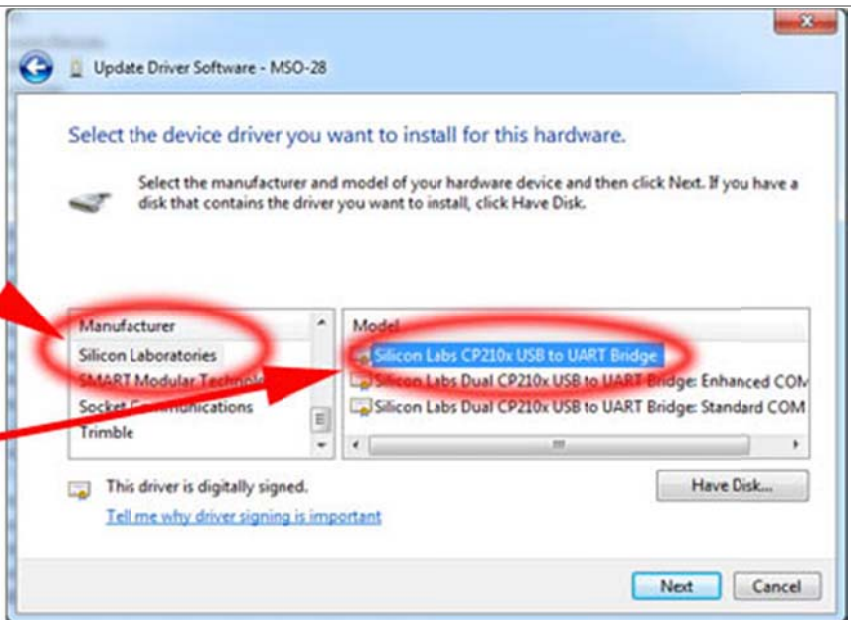


14.

Select manufacturer
"Silicon Laboratories"

Select Model
"Silicon Labs CP210x USB to UART Bridge"

Click Next



15.

Ignore warning

Click Yes



16.

The MSO-28 software and hardware will run.

The only problem is that device manager displays "Silicon Labs CP210x ..." instead of "MSO-19"

This will be fixed in the future.

Click Close



17.

The software should be installed and ready to run.